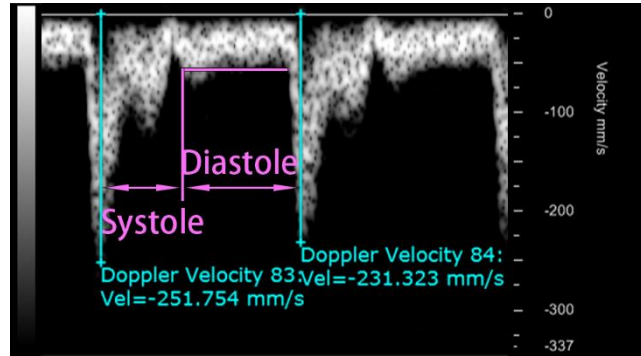
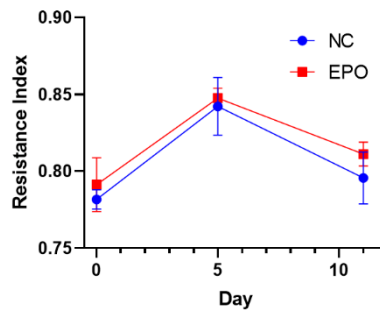


*Supplementary Material*



**Supplementary Figure S1.** Doppler ultrasonic spectrum of common carotid artery in NC group. The systolic/diastolic ratio of the common carotid artery in rats was about 2:3



**Supplementary Figure S2.** Changes of vascular resistance index in rats. There was no significant difference in vascular resistance index between the two groups during the rhEPO administration.



**Supplementary Figure S3.** Raw image of LSDI in left CCA of SD rat. The inflow pattern of the vessel shows a large slip near the wall, which is consistent with the conclusion of the two-phase model in the case of resolution larger than the thickness of the cell-free layer.